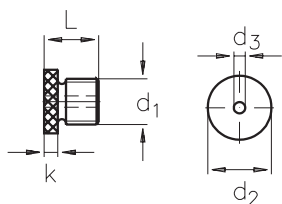

Vite bossolo ASS
ASS Attaching sleeve

Misura nominal size	Diametro-Ø rope-Ø mm	L mm	L ₁ mm	L ₂ mm	d mm	d ₁	d ₂	Articolo n° stock no.
M 8	1,5 + 2	20	12	3	12	M 8	M 4	351 010 008
M 10	3 + 4	25	15	3	14	M 10	M 6	351 010 010


Tappo di fissaggio ASS
ASS Locking cap

Misura nominal size	L mm	k mm	d ₁	d ₂ mm	d ₃ mm	Articolo n° stock no.
M 8	9	2,5	M 8	12	2,5	351 110 008
M 10	12	3,0	M 10	14	4,5	351 110 010



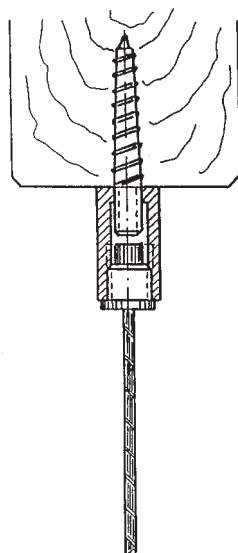
Montaggio con terminale cilindrico ASS
Assembly with ASS Cylindrical terminal



Montaggio con anello di bloccaggio ASS
Assembly with ASS Clamping ring

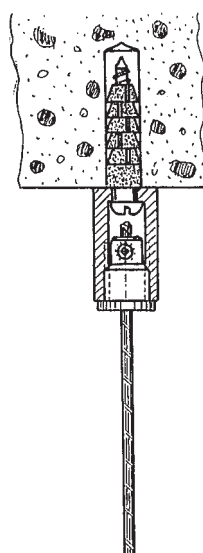


Assemblato
assembled



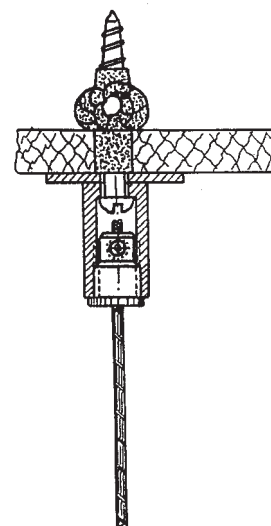
Fissaggio al muro con vite prigioniera e terminale cilindrico ASS.

Fixing by wall stud Rope with ASS Cylindrical Terminal



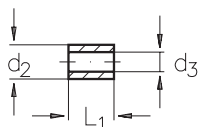
Fissaggio con perno prigioniero e anello di bloccaggio ASS.

Fixing by dowel Rope with ASS Clamping Ring

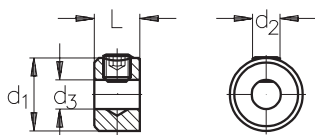


Fissaggio a pannello di cartongesso con rondella NIRO.

Fixing to plasterboard Panel with NIRO Cover Washer

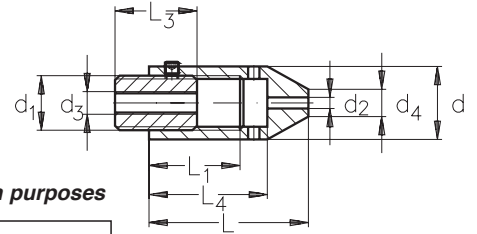

Terminale cilindrico ASS
ASS Cylindrical terminal

Misura nominal size	Diametro-Ø rope-Ø mm	d ₂ mm	d ₃ mm	L ₁ mm	Articolo n° stock no.
2	2	5,4	2,2	6	351 210 002
3	3	6,3	3,3	8	351 210 003
4	4	7,5	4,3	10	351 210 004


Anello di bloccaggio ASS
ASS Clamping ring

Nenngröße nominal size	Seil-Ø rope-Ø mm	d ₁ mm	d ₂	d ₃ mm	L mm	Articolo n° stock no.
2	2	8	M 4	2,3	6	351 310 002
3	3	10	M 4	3,3	6	351 310 003
4	4	12	M 4	4,3	8	351 310 004

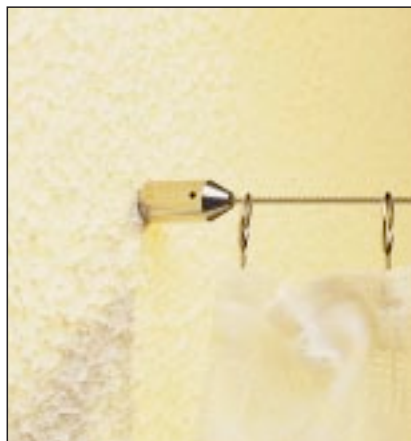


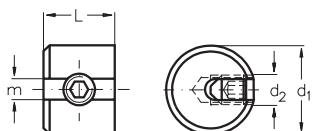


Tenditore ASS a disegno ornamentale

ASS Tensioning unit for decoration purposes

Misura nominal size	Diametro-Ø rope-Ø mm	L mm	L ₁ mm	L ₃ mm	L ₄ mm	d mm	d ₁	d ₂ mm	d ₃	d ₄ mm	Articolo n° stock no.
2	1,5 + 2	35	20	18	26	16	M 12	2,5	M 5	6	351 410 002
4	3 + 4	40	25	23	33	20	M 16	4,5	M 6	12	351 410 004





Fermo ASS

ASS Stopper

Misura <i>nominal size</i>	Diametro-Ø <i>rope-Ø</i> mm	m mm	d ₁ mm	d ₂	L mm	Articolo n° <i>stock no.</i>
2	1,5 + 2	2,2	10	M 4	8	351 710 002
4	3 + 4	4,3	15	M 8	12	351 710 004
6	5 + 6	6,3	20	M 10	15	351 710 006

Utilizzabile solo con funi 7 x 7 e 7 x 19.

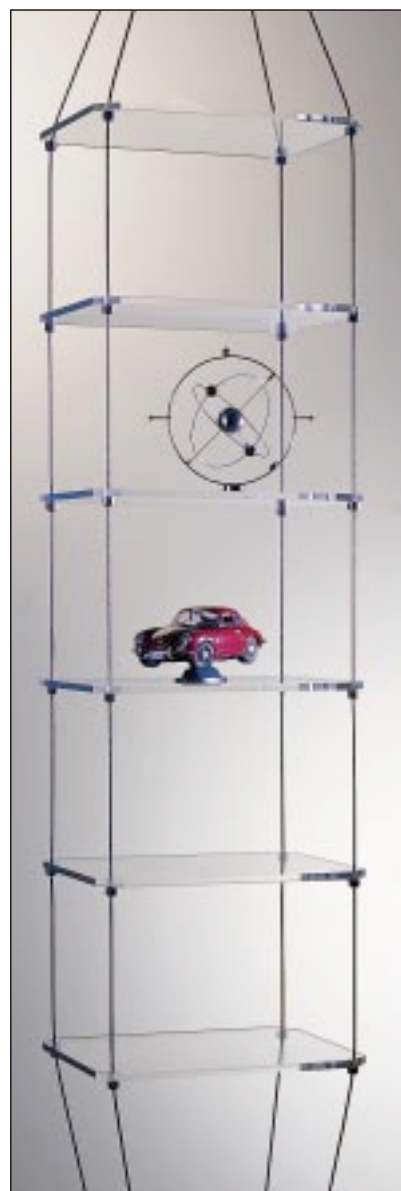
Only applicable for rope constructions 7 x 7 and 7 x 19.

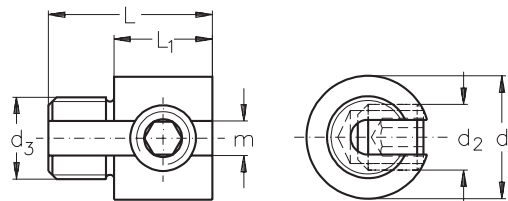


Montaggio semplice



Easy Handling





Fermo finale ASS

ASS End stop

DBGM

Misura nominal size	Diametro-Ø rope-Ø mm	m mm	d ₁ mm	d ₂	d ₃	L mm	L ₁ mm	Articolo n° stock no.
4	3 + 4	4,3	15	M 8	M 10	20	12	333 110 004

Utilizzabile solo con funi 7 x 7 e 7 x 19.

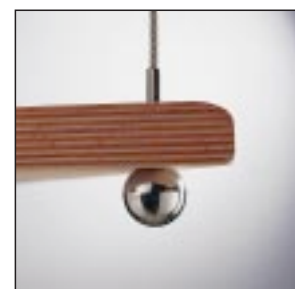
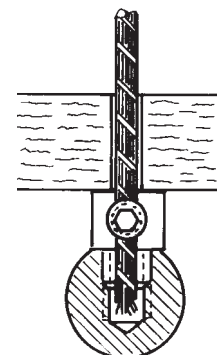
Only applicable for rope constructions 7 x 7 and 7 x 19.

I fermi finali ASS permettono di tagliare le funi secondo le vostre necessità. Come illustrato a destra, le estremità delle funi vengono racchiuse nelle sfere ASS.

The ASS End stop enables you to cut the ropes according to your requirements. The wires at the end of the rope vanish into the screwed ASS Ball.

In questo modo si avrà una chiusura bella alla vista e si evitano le fastidiose sfilacciature delle funi troncate.

On the one hand you have a pleasant end fitting, on the other hand the risk of injury by the sharp wires is averted.



Sfere ASS

con filetto interno

ASS Ball

with internal thread, right hand

Misura nominal size	Filetto thread d ₁	d ₂ mm	L mm	L ₃ mm	Articolo n° stock no.
M 4/15	M 4	15	14,0	9	333 210 400
M 5/20	M 5	20	18,5	12	333 210 520
M 5/24	M 5	24	22,0	15	333 210 500
M 6/20	M 6	20	18,5	12	333 210 620
M 6/24	M 6	24	22,0	15	333 210 600
M 8/24	M 8	24	22,0	15	333 210 800
M 10/24	M 10	24	22,0	15	333 211 000

