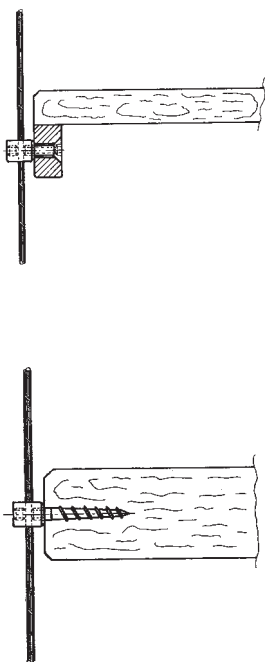
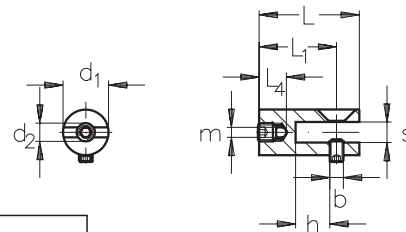


Clip ASS per espositori

ASS Display clip

Misura <i>nominal size</i>	Diametro-Ø <i>rope-Ø</i> mm	m mm	L mm	L ₁ mm	d mm	d ₁	d ₃	Articolo n° <i>stock no.</i>
2	1,5 + 2	2,2	10	5	8	M 4	M 4	352 110 002
4	3 + 4	4,2	16	11	12	M 4	M 8	352 110 004





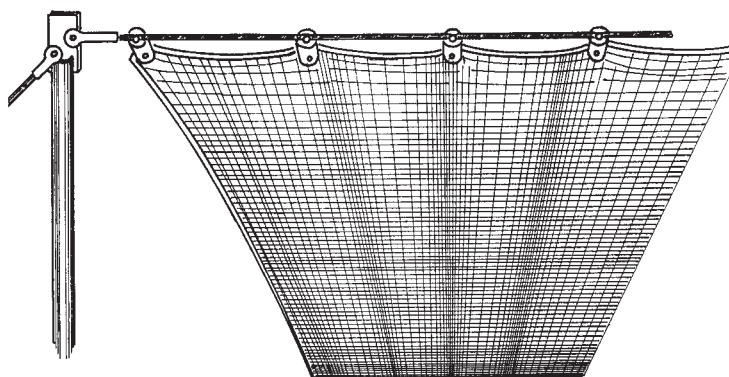
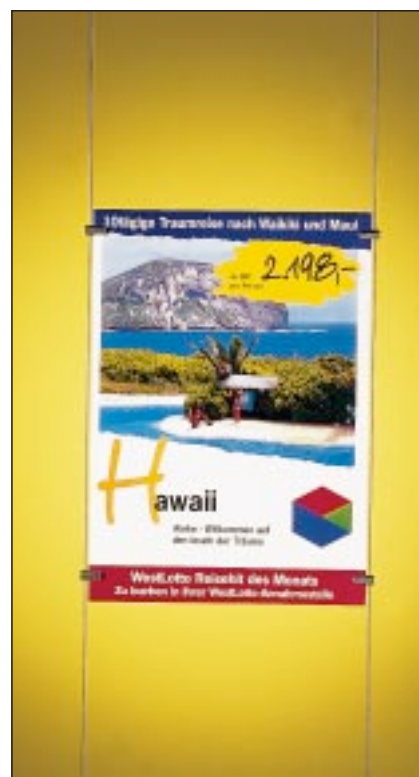
Ganascia ASS di fissaggio

ASS Clamping jaw

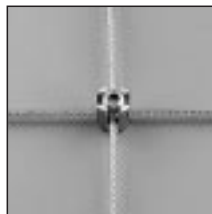
Misura nominal size	Diametro-Ø rope-Ø mm	L mm	L ₁ mm	L ₄ mm	d ₁ mm	d ₂	m mm	h mm	b	s mm	Articolo n° stock no.
2	1,5 + 2	22	17	5	10	M 4	2,2	7,5	M 3	4,5	352 210 002

Le ganasce ASS sono supportate da una vite prigioniera M 4 x 4 per fissare la fune e una vite (da M 3 x 5 a M 3 x 10) in funzione della consistenza del materiale da fissare e sostenere.

The ASS Clamping Jaw is supplied with a M 4 x 4 stud for fixing the rope and a choice of M 3 x 5 stud or M 3 x 10 countersunk bolt for fixing the display material etc.

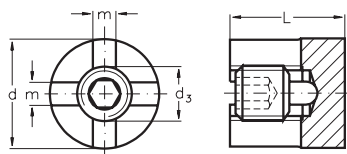


Applicazione della ganascia ASS.
Tensione di tessuto di protezione (per il sole o altro).
Applicability ASS Clamping jaw
Tensioning of textiles as protection against sun, view or for textile ceilings.



**Clip d'incrocio NIRO
tipo semplice**

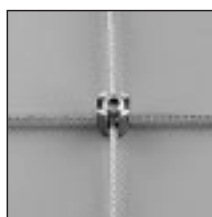
**NIRO Cross-over clip,
simple**



Misura nominal size	Fune-Ø rope-Ø mm	d mm	L mm	d ₃	m mm	Articolo n° stock no.
4	3 + 4	20	21	M 10	4,2	341 010 004
6	5 + 6	20	25	M 12	6,2	341 010 006

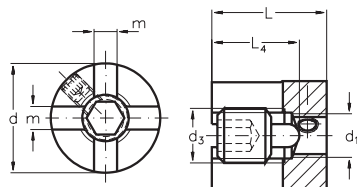
per funi semplici incrociate a 90°

for simple rope cross-over at right angles



**Clip d'incrocio NIRO
tipo semplice**
fissaggio a muro con M 8

**NIRO Cross-over clip,
simple**
with connection to the wall M 8



Misura nominal size	Fune-Ø rope-Ø mm	d mm	L mm	L ₄ mm	d ₁	d ₃	m mm	Articolo n° stock no.
4	3 + 4	20	21	16	M 8	M 10	4,2	341 012 004

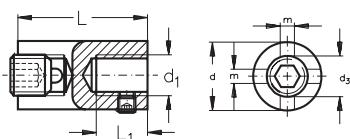
per funi incrociate a 90° e fissate a muro con M 8

for rope cross-over at right angles and wall fixing
with M 8 threaded rod



Clip ASS 3D d'incrocio
fissaggio a muro con M 12

ASS Cross-over clip 3 D
with connection to the wall M 12



Misura nominal size	Fune-Ø rope-Ø mm	d mm	L mm	d ₁	d ₃	L ₁ mm	m mm	Articolo n° stock no.
4	3 + 4	20	36	M 12	M 10	10	4,2	341 014 004
6	5 + 6	20	40	M 12	M 12	10	6,2	341 014 006

per funi incrociate a 90° e fissate a muro con barretta M 12, 3 direzioni possibili della fune (vedi foto pag. 43)

for rope cross-over at right angles and wall fixing
with M 12 threaded rod, three directional rope path
possible (see photo page 43)

DBGM

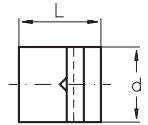


Clip ASS d'incrocio

ASS Cross-over clip

DBGM
geschütztes
Design
marchio
registrato

Misura nominal size	Marcatura marking	Fune-Ø rope-Ø mm	d mm	L mm	Articolo n° stock no.
4	v	3 + 4	22	24	341 016 004
6	∨	5 + 6	22	26	341 016 006



per funi incrociate con qualsiasi angolatura

for rope cross-over at any angle



Clip ASS d'incrocio

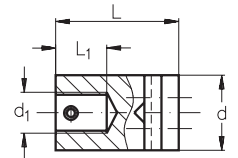
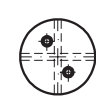
fissaggio a muro con M 12

ASS Cross-over clip

with connection to the wall M 12

DBGM
geschütztes
Design
marchio
registrato

Nenngroße nominal size	Kennzeichnung marking	Seil-Ø rope-Ø mm	d ₁	d mm	L ₁ mm	L mm	Articolo n° stock no.
4	v	3 + 4	M 12	22	15	36	341 018 004
6	∨	5 + 6	M 12	22	15	38	341 018 006



per funi incrociate con qualsiasi angolatura e fissate a muro con M 12 (vedi foto pag. 43)

for rope cross-over at any angle and wall fixing with M 12 threaded rod (see photo page 43)



Clip ASS d'incrocio

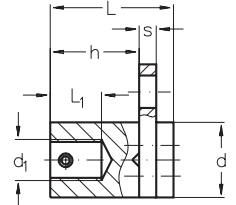
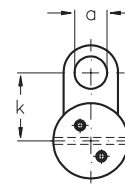
fissaggio a muro con M 12 e occhiello di connessione

ASS Cross-over clip

with connection to the wall M 12 and eye connector

DBGM
geschütztes
Design
marchio
registrato

Misura nominal size	Fune-Ø rope-Ø mm	d ₁	d mm	L ₁ mm	L mm	s mm	k mm	h mm	a mm	Articolo n° stock no.
6	3 - 6	M 12	22	15	36	6	20	24	9,5	341 020 006



per funi su piani orizzontali o verticali con un occhiello di connessione ad altre funi, fissate a muro con M 12 (vedi foto pag. 43)

for ropes in the horizontal and vertical planes with one eye connector for additional connections, fixing to the wall with M 12 rod (see photo page 53)



Clip ASS d'incrocio

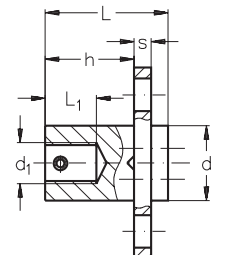
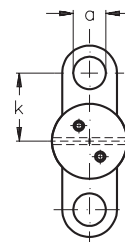
fissaggio a muro con M 12 e 2 occhielli di connessione

ASS Cross-over clip

with connection to the wall M 12 and two eye connectors

DBGM
geschütztes
Design
marchio
registrato

Misura nominal size	Fune-Ø rope-Ø mm	d ₁	d mm	L ₁ mm	L mm	s mm	k mm	h mm	a mm	Articolo n° stock no.
6	3 - 6	M 12	22	15	36	6	20	24	9,5	341 021 006



per funi su piani orizzontali o verticali con 2 occhielli di connessione ad altre funi, fissate a muro con M 12

for ropes in the horizontal and vertical planes with two eye connectors for additional connections, fixing to the wall with M 12 rod