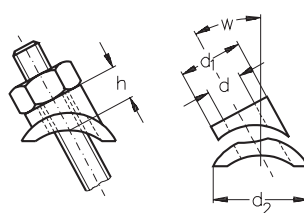


**Raccordo curvo ASS**  
per base piatta

**ASS Angle positioner**  
for flat posts

Misura nominal size	passaggio per filetto fits for thread	d mm	d <sub>1</sub> mm	d <sub>2</sub> mm	da from	w a to	da from mm	h a to mm	Articolo n° stock no.
6	M 4 - M 6	6,4	13	20	25°	45°	9,5	10,5	332 510 006
10	M 8 - M 10	10,6	18	24	25°	45°	14,0	15,0	332 510 010

DBP



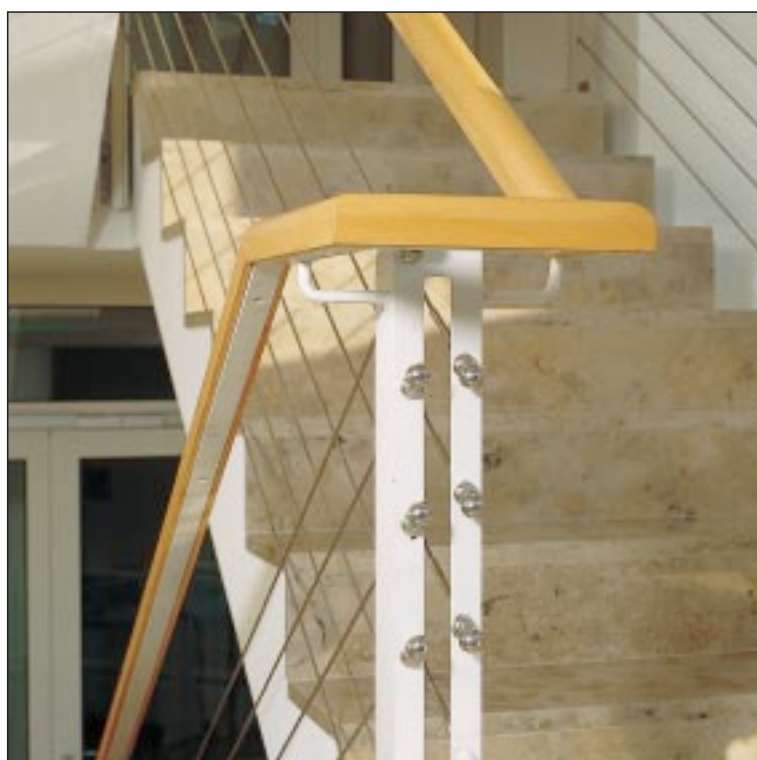
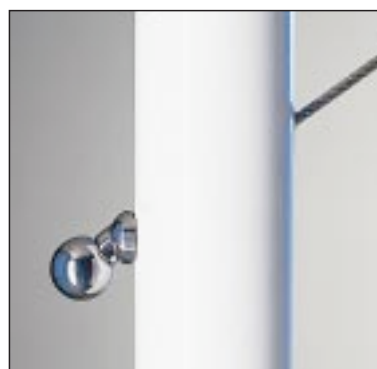
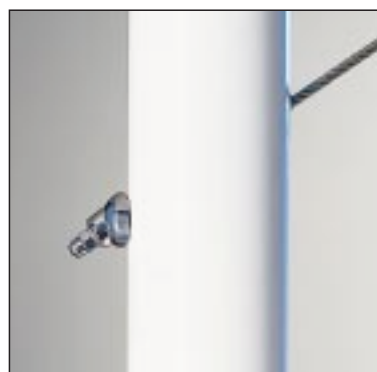
**Raccordo curvo ASS**  
per base curva

**ASS Angle positioner**  
for round posts

Misura nominal size	passaggio per filetto fits for thread	d mm	d <sub>1</sub> mm	d <sub>2</sub> mm	da from	w a to	da from mm	h a to mm	Articolo n° stock no.
6	M 4 - M 6	6,4	13	20	25°	45°	12	13	332 511 006
10	M 8 - M 10	10,6	18	24	25°	45°	16	18	332 511 010

DBP

Per montanti o stipiti di diametro tra 30 e 50 mm.  
For posts with an outside diameter of 30 - 50 mm.



I raccordi curvi ASS permettono di utilizzare le funi con una angolatura tra 25° e 45°.

*The ASS Angle Positioner permits tensioning of the rope between 25 and 45 degrees.*



**Raccordo curvo ASS con bloccafune**  
per base **piatta**

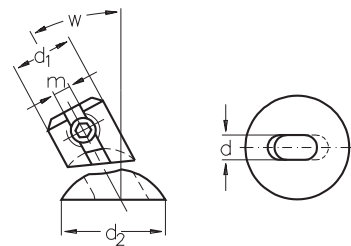
**ASS Angle Stopper**  
for **flat posts**

DBP

Misura nominal size	passaggio per filetto fits for rope mm	d mm	d <sub>1</sub> mm	d <sub>2</sub> mm	m mm	w		Articolo n° stock no.
						da from	a to	
4	3 + 4	6,5	15	20	4,2	25°	45°	332 520 004
6	5 + 6	10,5	20	24	6,2	25°	45°	332 520 006

Utilizzabili con terminali filettati ASS tipo Super-Mini e per funi 7 x 7 e 7 x 19.

Only applicable with ASS Threaded terminals, Super-Mini type and for rope constructions 7 x 7 and 7 x 19.



**Raccordo curvo ASS con bloccafune**  
per base **curva**

**ASS Angle Stopper**  
for **round posts**

DBP

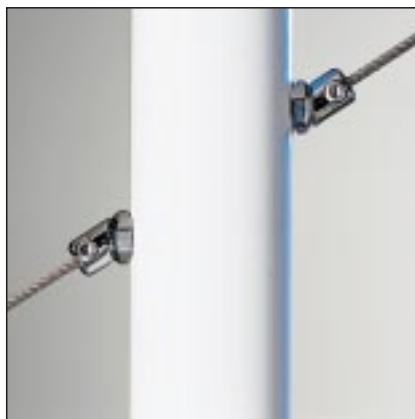
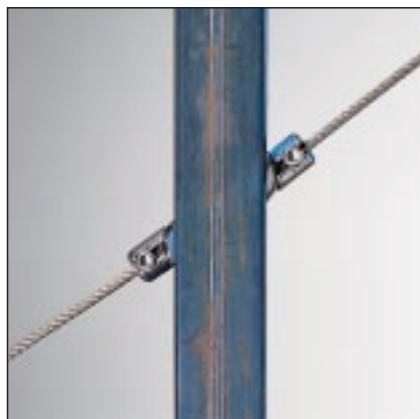
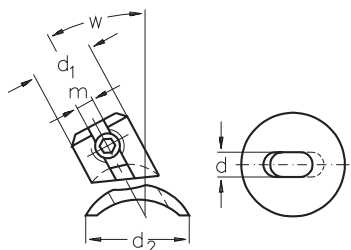
Misura nominal size	passaggio per filetto fits for rope mm	d mm	d <sub>1</sub> mm	d <sub>2</sub> mm	m mm	w		Articolo n° stock no.
						da from	a to	
4	3 + 4	6,5	15	20	4,2	25°	45°	332 522 004
6	5 + 6	10,5	20	24	6,2	25°	45°	332 522 006

Utilizzabili con terminali filettati ASS tipo Super-Mini e per funi 7 x 7 e 7 x 19.

Only applicable with ASS Threaded terminals, Super-Mini type and for rope constructions 7 x 7 and 7 x 19.

Per montanti o stipiti di diametro fra 30 e 50 mm.

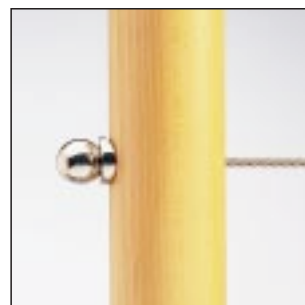
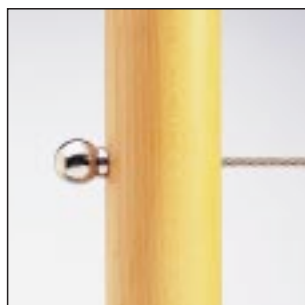
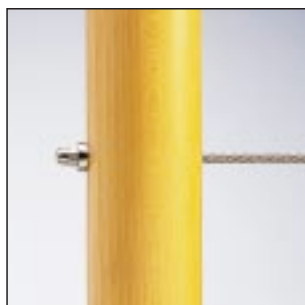
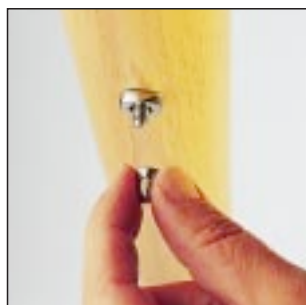
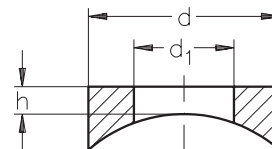
For posts with an outside diameter of 30 - 50 mm.



**Rondella speciale ASS**  
per base **curva**

**ASS Special Washer**  
for **round posts**

Misura nominal size	passaggio per filetto fits for thread up to	d mm	d <sub>1</sub> mm	h mm	Larghezza montante diameter of the posts		Articolo n° stock no.
					da from	a to	
6	M 6	13	6,6	3	30	50	333 010 006
10	M 10	21	11,0	3	30	50	333 010 010



con rondella speciale ASS NG 6  
with ASS Special Washer NG 6

con rondella speciale ASS NG 6  
with ASS Special Washer NG 6

con rondella speciale ASS NG 10  
with ASS Special Washer NG 10